

Extracting Forceps

- Equipped with **Teflon Disc** to Guarantee a Safe Close and Opening
- **Non-Slip** and **Serrated Beaks**
- Available in **English** and **American** pattern, **Paedodontic** range, profile handle etc
- Made in **Germany** and supplied with **Lifetime Warranty**

**TOP
SELLER**



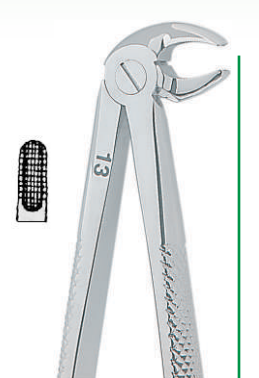
1284

Upper Incisors
& Cuspids



1286

Upper Bicusps



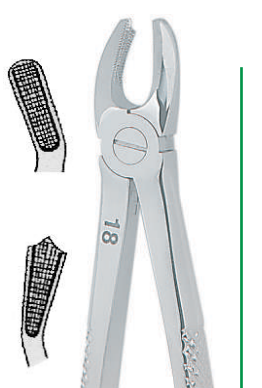
1288

Incisors and
Lower Bicusps



1289

Upper Molars Right



1290

Upper Molars Left



1292

Lower Molars



1296

Upper Roots



1297

Upper Third Roots



1302

Lower Third Roots

**Special Deal !
on a set of
12 Forceps**

**Call us to receive a FREE Kohler catalogue plus CD
featuring an extensive range of instruments (4000 items)
suitable for all aspects of Dentistry**

\$170.50 inc GST each



NEW Minvalux



The new series of ceramic coated Minvalux instruments

- Ideal for tooth or root extraction without damaging the bony socket wall
- Extremely durable and long lasting
- Anti-abrasive
- Antiglare
- Microscopically smooth surface
- Tissue friendly biocompatible anti allergenic
- Easy cleaning and sterilization

\$99.00 inc GST

Elevators-Luxcut



- Full Titanium Tip with Highest Cutting Precision and Long Lasting Sharpness
- Range of width sizes: 2, 3, 4 & 5mm
- Range of angles: Straight, Curved Angled, Left & Right
- Available in Apical or Bein handle with Flat or Slightly Grooved tips



\$70.00 inc GST

Ceramic Coated Scissors

NEW



- Ceramic coating for Extremely durable and long lasting use
- Highly abrasion resistance
- Anti-glare surface for NO disturbing light reflections
- Microscopically smooth surface for improved corrosion resistance
- Reduced friction factor, therefore lower wear, Tissue-friendly and Biocompatible due to Ceramic coating
- Anti-allergenic function

Micro Needle Holders

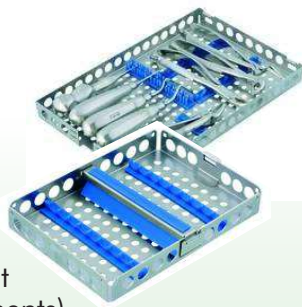


- Supreme quality
- Available in stainless steel, TC and ceramic
- Available with needle holder and scissors
- Available in different lengths, angles and thicknesses



Steritray

- All lids equipped with a Timer Function
- Trays are distinguished by Coloured Silicone Pins
- Made of Stainless Steel and available in 3 different sizes; Mini (up to 6 instruments), Midi (up to 9 instruments) & Maxi (up to 13 instruments)
- Wide range of trays suitable for Hospitals and Dental practices
- ½ Containers with wire basket + filter system



PEEK - Work Smarter

NEW

The new TRINOVO handle design made of PEEK

- **ERGONOMIC HANDLE** - allowing fatigue free working
- Good hydraulic stability
- Secure hygienic connection to stainless steel
- Excellent resistance to cleansers and disinfectants

Available in

- Gracey Curettes
- Universal Curettes
- Scalers
- Titanium tip scalers
- Periostial instruments



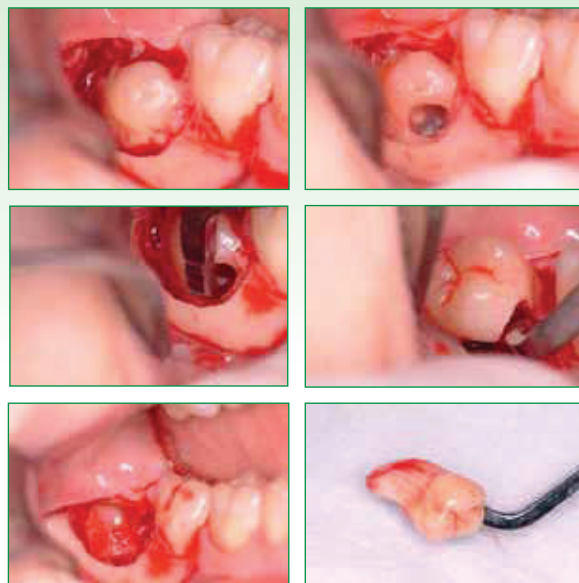
\$70.00 inc GST



Wisdom tooth elevator for 28 and 48

Wisdom tooth elevator for 18 and 38

\$140.00 ea
Inc GST



The majority of impacted wisdom teeth have conical or, as in the case of wisdom tooth buds, even rounded roots. After elevating the mucosa and exposing the bone, access to the wisdom tooth is obtained. To elevate the wisdom tooth from its bony socket, it is usually necessary to remove it in several fragments with wide drilling of the pericoronal bone. The procedure is different with the new wisdom tooth elevator: The tooth is elevated at its coronal part and the start of the radicular part. Drilling a hole 2 to 3 mm in diameter at the enamel-dentine junction suffices to insert the tip of the instrument. The head of the instrument is inserted into the tooth, and the tip is then rotated. This simple manoeuvre allows the tooth to be elevated rapidly from its socket. Depending on the wisdom tooth situation, the same instrument is used for the lower right and upper left wisdom teeth (48 and 28) and for the lower left and upper right wisdom teeth (38 and 18).

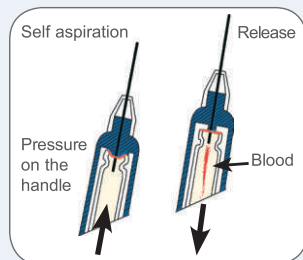


STAINLESS STEEL SYRINGES



STERILIFE[®]

- > 100% stainless steel
- > Highly resistant to sterilisation.
- > Stainless steel syringes with lateral insertion of the cartridge.



Ref. 2310	Syringe without aspiration, 1,8 ml Metric thread
Ref. 2310US	Syringe without aspiration, 1,8 ml American thread
Ref. 2310-22US	Syringe without aspiration, 2,2 ml American thread
Ref. 2320	Syringe with self-aspiration, 1,8 ml Metric thread
Ref. 2320US	Syringe with self-aspiration, 1,8 ml American thread
Ref. 2320-22US	Syringe with self-aspiration, 2,2 ml American thread
Ref. 2330	Syringe with manual aspiration, 1,8 ml Metric thread
Ref. 2330US	Syringe with manual aspiration, 1,8 ml American thread
Ref. 2330-22US	Syringe with manual aspiration, 2,2 ml American thread

