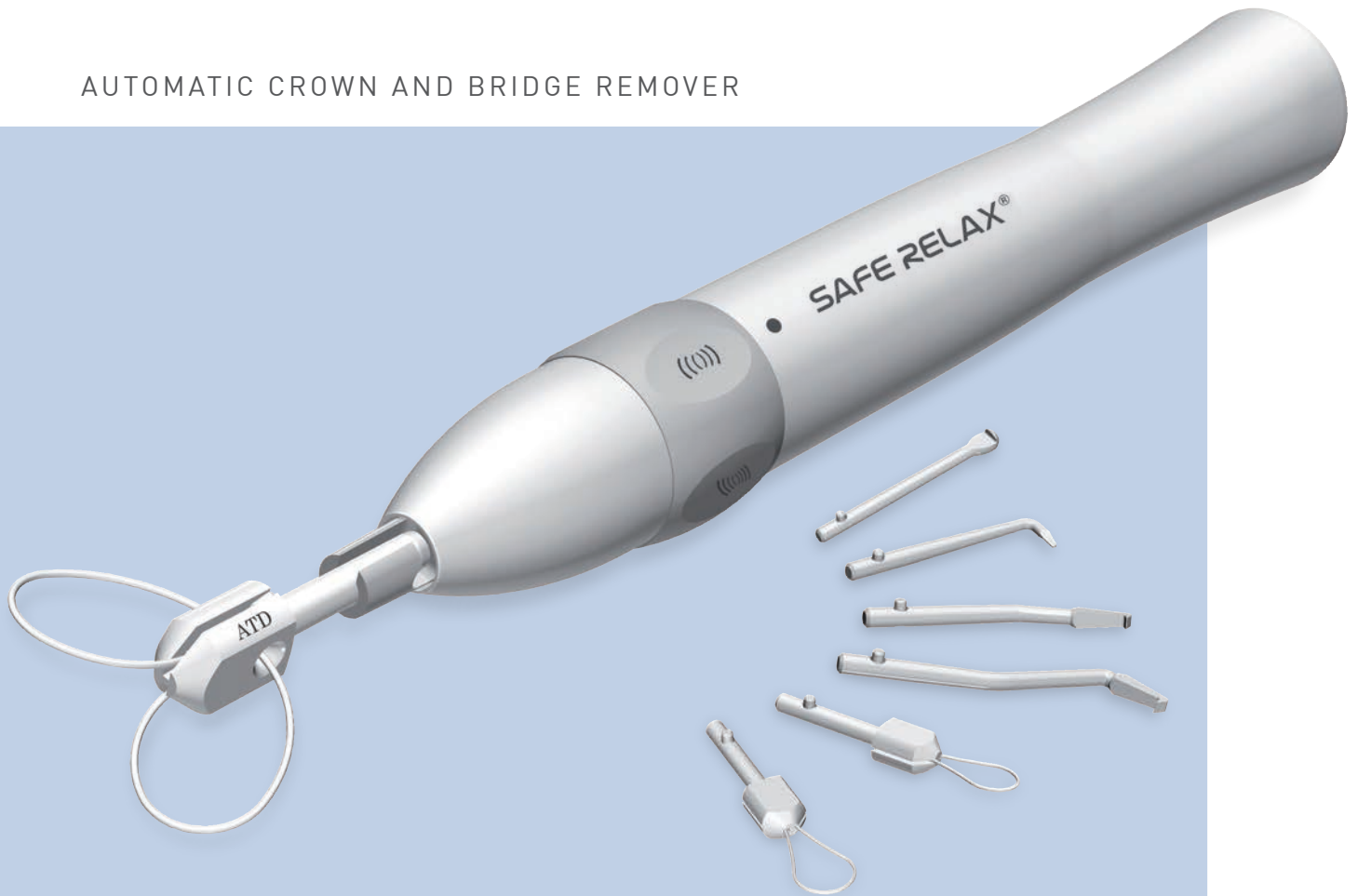


SAFE RELAX[®]

EVOLUTION

NEW

AUTOMATIC CROWN AND BRIDGE REMOVER



*Gentle, efficient
and quick*

anthogyr

A global solution for dental implantology

SAFE RELAX®

An effective, stress-free automatic system

Removal of a bridge or crown remains a delicate procedure. With these constraints in mind, anthogyr has developed the **SAFE RELAX®**. The intensity and frequency of the micro-strokes can be controlled to ensure enhanced comfort and results, letting you work in complete safety.

The new anthogyr **SAFE RELAX®** crown and bridge remover enables you to successfully carry out crown and bridge removals without stress for the patient.

- Its unique non-reloading mechanism fits onto all brands of electric and air motors.
- Its high-frequency micro-strokes make it the fastest system in the world : **up to 20 movements per second !**
- Porcelain is protected by the regular and controlled intensity of the micro-strokes.

The **SAFE RELAX®** comes with a wide range of inserts to suit all prosthesis configurations.

The main assets

SAFE RELAX® EVOLUTION, GENUINE COMFORT FOR THE PATIENT

- New ergonomic design
- New one-click single attachment system !
- High-frequency of micro-strokes
- New intuitive intensity adjustment ring
- Non-reloading mechanism
- Genuine comfort for the patient !
- No damage to the porcelain : ATD system
- New packaging
- Fits any brand of electric or air motor
- Sterilization box for hooks and wire-tips (optional)

UNIQUE !
NON-RELOADING
MECHANISM!



GENTLE EFFICIENCY

HIGH-FREQUENCY EFFICIENCY → The **SAFE RELAX®** converts the motor's rotary motion into a series of ultra-fast micro-strokes.
The recommended speed-range is between 5,000 and 25,000 rpm.
Maximum frequency of 20 micro-strokes per second !

THE COMFORT OF CONTROLLED INTENSITY → **5 progressive adjustments** of the force applied to the porcelain (**Fig. A**).
Total control of the force applied to the porcelain.
Non-stressful for the patient as no resonance is felt !



ERGONOMIC DESIGN → For improved grip of the instrument.

NON-RELOADING MECHANISM → Maintains a constant working axis and precise, continuous contact with the porcelain.

ONE-CLICK INSERT POSITIONING → New bayonet attachment that lets you insert your hook or wire-tip in a single hand movement (**Fig. B**).
Eliminates the risk of inserts unscrewing !



Fig. C



Fig. D

ATD WIRE-TIPS SYSTEM

These are essentially recommended for bridge removal, they are inserted into interdental spaces (**Fig. C and D**).

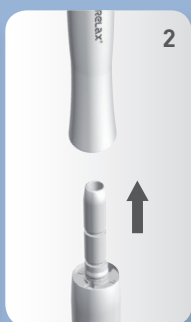
Bridge protection.

Safety : wire-tips provide sturdy support (no risk of it slipping).

Working along the tooth axis : reducing the risk of root fracture.

Ease of crown removal.

SIMPLE AND RAPID OPERATING MECHANISM IN 4 EASY STEPS



1. Attach hook to your **SAFE RELAX®** with a single click.

2. Fix your **SAFE RELAX®** onto the electrical or air motor of your unit.

3. Position the insert on the porcelain.

4. Press the motor pedal: a simple traction motion sets off a series of ultra-fast micro-strokes, with adjustable intensity and frequency. The micro-strokes stop as soon as traction is released or the motor stops.

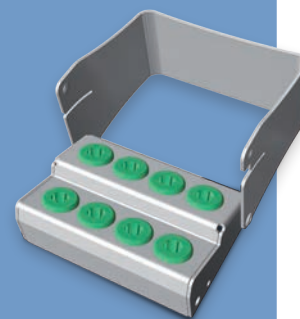
Description and product references

Kit Ref. 6961C (picture below)

→ **SAFE RELAX® EVOLUTION** + 4 hooks + single and double wire-tips.

Kit Ref. 6950C

→ **SAFE RELAX® EVOLUTION** + 4 hooks.



**Sterilization box
Ref. 5932** (picture above)

→ Optional for hooks and wire-tips



**NEW
attachement
tools**

- 1 **Elbow hook** for crowns on posterior teeth, Ref. 5928
- 2 **Flat hook with non-slip grooves** for crowns on anterior teeth, Ref. 5929
- 3 **Hook** for crowns on premolars, Ref. 5927
- 4 **Edge hook** for bridges, Ref. 5925
- 5 **50 mm wire-tip** for bridges* | Ref. ATD 012
60 mm wire-tip for bridges*
- 6 **95 mm ceramic wire-tip** for 3-4 piece ceramic bridges of 3 or 4 elements**, Ref. ATD 022
- 7 **Screw for wire-tip**, Ref. ATD 080
- 8 **Screwdriver for wire-tip**, Ref. ATD 082

* for 50 mm and 60 mm wire-tips,
a spare cable is included in the kit.

** for ceramic wire-tip, a 150 mm cable
is included in the kit.

AFTER-SALES SERVICE DEPARTMENT

Our After-sales Service Department is always on hand to answer your maintenance and operating questions regarding your instruments.

Email : serge.serra.sav@anthogyr.com
Phone : +33 (0)4 50 58 50 53

anthogyr

A global solution for dental implantology

2 237 Avenue André Lasquin 74700 Sallanches - France
Phone : +33 (0)4 50 58 02 37 - Fax : +33 (0)4 50 93 78 60
Email : sales@anthogyr.com
www.anthogyr.com

anthogyr Inc.
3495 Piedmont Rd, Building 11 Suite 710
Atlanta GA, 30305
Office (404) 495 - 5982
Email : mike.foley.sales@anthogyr.com